



EZ Sleeper PR761 with Twilight



Comfort Zone™
by GOLDEN

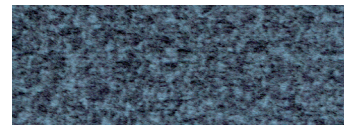
The EZ Sleeper is a luxury power lift recliner featuring a modern look with a tailored back and stylish track arm design, while the plush chaise pad and pocketed coil spring seat provide hours of unmatched comfort. Positioning options are endless with our 5-zone positioning system, which includes our patented Twilight Technology, patented MaxiComfort® Positioning, adjustable headrest and lumbar support. Healthy benefits include being able to elevate the feet above the heart while experiencing a feeling of weightlessness.



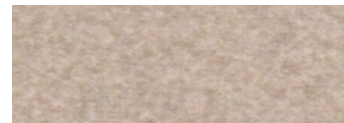
FDA Class II Medical Devices designed by Golden Technologies are intended to assist persons with chronic physical disabilities.

*The
EZ Sleeper*

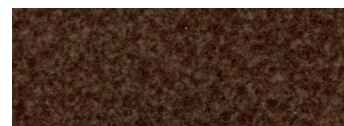
Standard Fabrics:



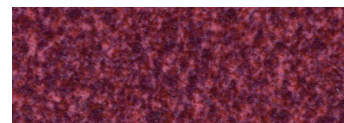
Calypso (TCP)



Camel (TCM)



Hazelnut (THA)



Shiraz (TSZ)



Sterling (TST)

This fabric has a modern, updated look with rich color options. It features our exclusive SofTouch™ with Stain Defense coating.

* An upcharge will apply for all crossover fabrics.

Standard Features:

- Patented Twilight Tilt Technology
- Patented MaxiComfort® Positioning
- Adjustable Headrest
- Adjustable Lumbar
- Programmable AutoDrive™ Hand Control
- USB Charging Port
- Extra Pocket
- SmartTek® Diagnostic System

Upgrade Options:

- NEW HeatWave Technology
- Deluxe Therapeutic Heat & Vibrating Massage



MAXICOMFORT® Series PR761

Model Number	PR761-MLA
Size	Medium/Large
Class II Medical Device	YES
Weight Capacity	400 LBS
Positioning	Twilight
Comfort Zone(s)	5
Twilight Technology	YES
Chaise Seat	YES
Pocketed Coil Seat	YES
Back Type	Seam
Removable Back Type	Quick Release
Head Rest Cover	NO
Arm Rest Covers	NO
Overall Width	34"
Overall Height	46"
Seat Width	22"
Floor to Top of Seat	21"
Seat Depth	21"
Seat to Top of Back	30"
Seat to Top of Arm	8"
Distance Required from Wall Reclined	24"
Extension Reclined from Back of Seat to End of Foot Rest	43"
Life Time Warranty, Chair Frame, Lift Frame, Recline Mechanism	YES
Warranty on Electrical parts	3 YR
Pro Rated Years 4 Thru 7	YES
Warranty on Mechanical Labor	3 YR
Warranty on Electrical Labor	1 YR
Hand Control Routing	Inside Pocket
Extra Pocket Option	Standard
Heat & Vibrating Massage Option	YES
HeatWave Technology Option	YES
Nirvana with HeatWave Option	NO
Articulating Headrest Option	Standard
Power Adjustable Lumbar Option	Standard
Foot Rest Extension Option	YES
Straight Lift Option	Standard
USB Charging Port	Control Box
Battery Backup	YES
SmartTek Diagnostic System	Standard
Place of Origin	USA



**The World's Most Advanced
Power Positioning Lift Recliner
with Patented Twilight Technology!**



Shown in Hazelnut

HEALTHY BENEFITS:

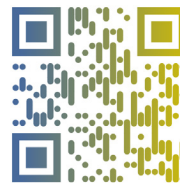
- Elevates Feet Above Heart
- Alleviates Pressure On Lungs
- Distributes Weight
- Relieves Pressure Points
- Encourages Proper Posture
- Supports Natural 'S' Shape of Spine
- Stylish New Track Arm Design
- Available in Luxurious Brisa® Fabrics With Breathable Technology

Comfort Zone™
by GOLDEN

Comfort Zones 1 - 5 This positioning system incorporates all five adjustable comfort zones to create the ultimate wellness comfort experience with our patented Twilight Technology. Each Comfort Zone can be adjusted independently by using the exclusive AutoDrive™ hand control.



WE PATENTED COMFORT™



Scan with your smartphone camera to learn more about Comfort Zone by Golden.



Phone: 800-624-6374
Fax: 800-628-5165
www.goldentech.com



Literature is current at time of printing. Golden Technologies reserves the right to make changes to the product or literature at any time.

Sizes may vary depending on fabric, filling material, upholstery and carpet thickness. All measurements taken on concrete floor using levels and metal rulers.



Complies with
UL 73 and
CSA C22.2 No. 68



www.facebook.com/goldentechnologies

LIT-SHT-PR761 Rev. A 092625