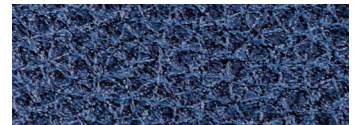




Standard Fabrics:

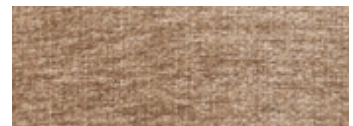


Lagoon

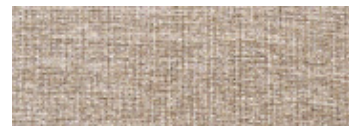


Umber

This polyurethane fabric is soft and supple and was designed to be highly durable. It provides a realistic leather-like look with a subtle texture. The composite material makes it water-resistant, suitable for situations where some degree of liquid protection is needed but not a complete barrier.



Sand



Stone

This luxurious plush fabric has a modern, updated look with rich color options.

Crossover fabrics are unavailable.

**Rhea
PR447**



Comfort Zone™
by GOLDEN

Take a vacation from your busy day in The Rhea. It offers an overstuffed seam back design, plush chaise pad and an open arm design that holds numerous standard features that include a cup holder, power port for accessories, two storage compartments, and a wireless phone charger. Positioning options are endless with our 5-Zone Comfort Zone™ Positioning System, which includes our patented Twilight Technology, MaxiComfort® Positioning, adjustable headrest and lumbar all operated by our programmable AutoDrive™ hand control. For extra wellness and comfort, our Nirvana™ Swedish Massage with HeatWave™ Technology comes standard providing therapeutic warmth starting at your shoulders and continuing down to your feet. When you open the right arm, you will find a wireless charger and a storage compartment that also holds the AutoDrive hand control. In the left arm, you will find a cup holder, a power port, and a second storage compartment that holds the Nirvana hand control. As a bonus, you can use the cup holder without losing the comfort of the armrest thanks to the split design!



Standard Features:

- Patented Twilight Tilt Technology
- Patented MaxiComfort® Positioning
- Adjustable Headrest
- Adjustable Lumbar
- Programmable AutoDrive™ Hand Control
- Power Port + LED Light
- Nirvana™ Swedish Massage with HeatWave™ Technology
- Wireless Phone Charger
- Built-in Cup Holder
- SmartTek® Diagnostic System
- Extra Pocket



DeLUNA Series PR447

Model Number	PR447-MED	PR447-LAR
Size	Medium	Large
Class II Medical Device	YES	YES
Weight Capacity	400 LBS	400 LBS
Positioning	MaxiComfort	MaxiComfort
Comfort Zone(s)	5	5
Twilight Technology	YES	YES
ZG+	YES	YES
Chaise Seat	YES	YES
Pocketed Coil Seat	YES	YES
Back Type	Seam	Seam
Removable Back Type	Quick Release	Quick Release
Head Rest Cover	NO	NO
Arm Rest Covers	NO	NO
Overall Width	37"	39"
Overall Height	45"	50"
Seat Width	22"	24"
Floor to Top of Seat	20"	21"
Seat Depth	21"	22"
Seat to Top of Back	29"	33"
Seat to Top of Arm	7"	8"
Distance Required from Wall Reclined	25"	30"
Extension Reclined from Back of Seat to End of Foot Rest	43"	44"
Life Time Warranty, Chair Frame, Lift Frame, Recline Mechanism	YES	YES
Warranty on Electrical Parts	3 YR	3 YR
Pro Rated Years 4 Thru 7	YES	YES
Warranty on Mechanical Labor	3 YR	3 YR
Warranty on Electrical Labor	1 YR	1 YR
Hand Control Routing	Right Arm Compartment	Right Arm Compartment
Extra Pocket Option	Standard	Standard
Heat & Vibrating Massage Option	NO	NO
Nirvana with HeatWave Option	Standard	Standard
HeatWave Technology	NO	NO
Articulating Headrest Option	Standard	Standard
Power Adjustable Lumbar Option	Standard	Standard
Foot Rest Extension Option	NO	NO
Straight Lift Option	Standard	Standard
USB Charging Port	Left Arm Compartment	Left Arm Compartment
Battery Backup	Lithium-Ion	Lithium-Ion
SmartTek Diagnostic System	Standard	Standard
Place of Origin	Imported	Imported

Designed and engineered in Old Forge, PA. Assembled in China using Golden components.

Standard Comfort & Convenience Features:



Right Arm: Wireless Charger & Storage Compartment



Left Arm: Cup Holder, Power Port & Storage Compartment



Adjustable Headrest & Lumbar



Nirvana™ with HeatWave™ Technology



Power Port + LED Reading Light

Optional Accessories:

- Cooling Fan
- Flex Light
- Audio Torch
- Illuminating Snack Bowl
- Essential Oil Diffuser
- Tablet Holder
- Stem Glass Holder



Comfort Zone™
by GOLDEN

Comfort Zones 1 - 5 This positioning system incorporates all five adjustable comfort zones to create the ultimate wellness comfort experience with our patented Twilight Technology. Each Comfort Zone can be adjusted independently by using the exclusive AutoDrive™ hand control.



WE PATENTED COMFORT™



Scan with your smartphone camera to learn more about Comfort Zone by Golden.



Phone: 800-624-6374

Fax: 800-628-5165

www.goldentech.com

Literature is current at time of printing. Golden Technologies reserves the right to make changes to the product or literature at any time.

Sizes may vary depending on fabric, filling material, upholstery and carpet thickness. All measurements taken on concrete floor using levels and metal rulers.

FDA Class II Medical Devices designed by Golden Technologies are intended to assist persons with physical disabilities.



Complies with
UL 73 and
CSA C22.2 No. 68



www.facebook.com/goldentechnologies

LIT-SHT-PR447, Rev C-013026